

# CERTIFICATE OF LOCATION OF GOVERNMENT CORNER

NORTH QUARTER Corner of Section 33, Township 107N, Range 39W

5th Principal Meridian, State of Minnesota, County of MURRAY

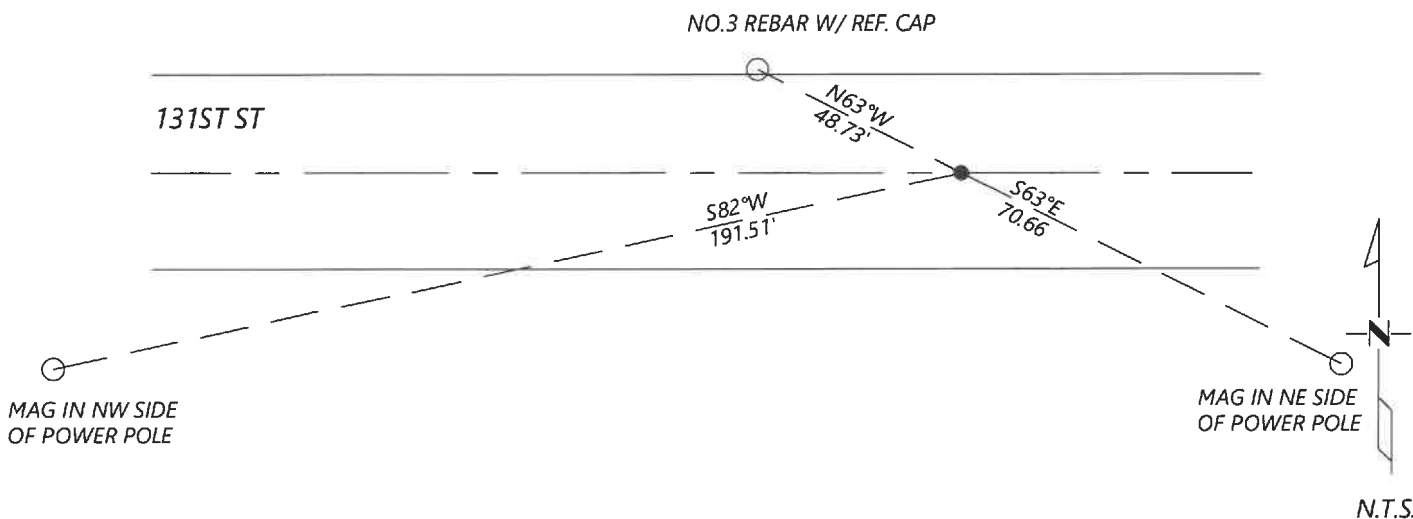
At the corner location shown on the sketch:

On 8/27/2020 found a NO.5 REBAR WITH CAP LS23008, BENT & SHOT AT BASE  
DATE

left monument as found       lowered monument       removed monument (explain)

On \_\_\_\_\_ placed a \_\_\_\_\_  
DATE

### SKETCH OF REFERENCE TIES



Statement of evidence for this corner location is on back of this page.

I hereby certify that this document was researched and prepared by me or under my direct supervision and that I am a licensed Land Surveyor under the laws of the State of Minnesota.

Signature [Signature]  
Date 6/16/2021 License No. 45874

Title:

- Land Surveyor
- Professional Engineer
- County Surveyor
- County Engineer

OFFICE OF THE COUNTY RECORDER

County of Murray

I hereby certify that this document was filed in the Co.

Recorder's office at \_\_\_\_\_ .M. on the \_\_\_\_\_ day of \_\_\_\_\_ A.D. 20 \_\_\_\_\_

County Recorder Karen Brown  
by JUN 22 2021, Deputy

DOCUMENT NO. \_\_\_\_\_

Statement of Evidence:

North Quarter Corner of Section 33, Township 107 North, Range 39 West, 5th Principal Meridian, Murray County, Minnesota.

- July 1861      *GLO Notes: Set post in mound*
- Nov. 1094      *Survey record for section 28 shows a stone i the south edge of grade.*
- April 1981      *Highway Department records show concrete monument 6" below grade and placed a steel pin.*
- March 2013      *Corner certificate filed by Perry Zieske shows that he dug with a backhoe and found no evidence of the corner. He set a  $\frac{5}{8}$ " iron stake with cap 23008 midway and online between section corners. He also lists the Murray County coordinates (2007 adj.)      N: 168757.54      E: 561558.00*
- Sept. 2020      *Westwood Professional Services searched and found a rebar with cap LS23008. Coordinates fit well to those listed from 2013 corner certificate. I accepted the found monument and established ties.*

Analysis of the recovered data, field evidence and survey measurements, indicates that the monument found is the correct perpetuation of this corner. For additional information concerning this corner please contact Westwood Professional Services.